

Pressure Sensor Air PS-AS



- ▶ Application: 0.2 to 3.0 bar
- ▶ Response time: 1 ms
- ▶ Pressure reference type: Absolute
- ▶ Power supply: 5 V
- ▶ Weight: 21 g

This sensor is designed to measure absolute air-pressure, especially the air box pressure of gasoline or Diesel engines.

An integrated circuit combines a piezo-resistive sensor element and an electronic for signal-amplification and temperature compensation. The output of the sensor is an analog, ratio metric signal.

Application

Application	0.2 to 3 bar (a)
Pressure reference type	absolute
Max. pressure	5 bar
Operating temp. range	-40 to 130°C
Media temp. range	-40 to 130°C
Storage temp. range	0 to 40°C
Max. vibration	According to ISO 16750-3

Technical Specifications

Mechanical Data

Mounting	M6
Fitting	12.05 ± 0.8 mm
Weight w/o wire	21 g
Sealing	O-ring 7.59 x 2.62 mm

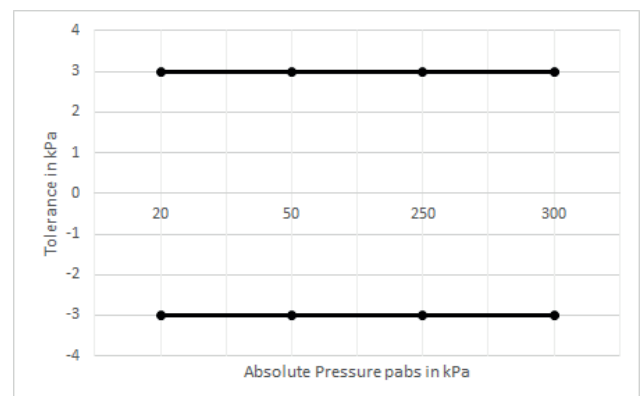
Electrical Data

Power supply U_s	4.75 to 5.25 V
Max power supply U_s max	16 V
Full scale output U_A at 5 V	0.4 to 4.65 V
Current I_s	9 mA

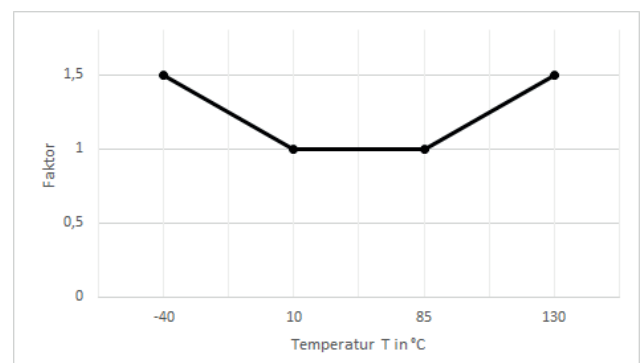
Characteristic

Response time T10/90	1 ms
Compensated range	10 to 85°C
Tolerance (FS) at $U_s = 5$ V	± 0.030 bar
Tolerance (FS)	± 1.07 %
Sensitivity	1,518 mV/bar
Offset	96 mV

Tolerance



Expansion of Tolerance



Connectors and Wires

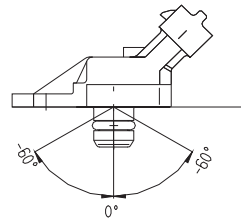
Connector	RB-COMP 1.1a/3P/Kod.1
Mating connector	D261.205.366-01
Pin 1	U _s
Pin 2	Gnd
Pin 3	Sig

Various motorsport and automotive connectors are available on request.

Installation Notes

- The PS-AS is designed for engines using ROZ95, ROZ98, M15, E22 and Diesel.
- The sensor can be connected directly to most control units.
- To avoid noise, an ECU-input circuit with a RC-low pass filter (tau = 2 ms) is recommended.
- Use engine oil (5W40) as O-Ring grease (no silicone based grease).
- Avoid miss-pinning (max. 5 minutes at I = 0.3 A).
- Please find further application hints in the offer drawing and free download of the sensor configuration file (*.sdf) for the Bosch Data Logging System at our homepage.

To avoid damage caused by condensate the maximum mounting position from vertical is +60°.



Safety Note

The sensor is not intended to be used for safety related applications without appropriate measures for signal validation in the application system.

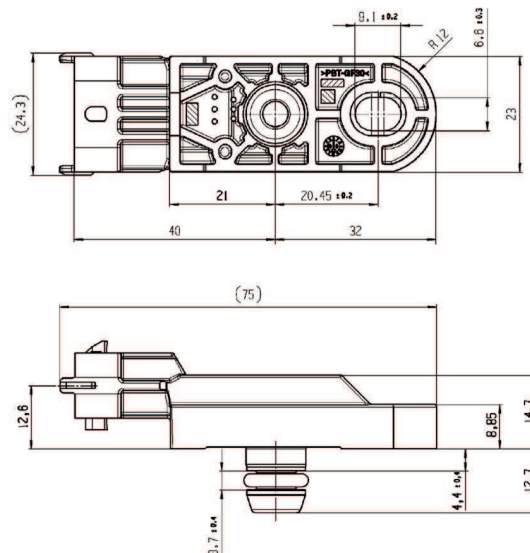
Legal Restrictions

Due to embargo restrictions, sale of this product in Russia, Belarus, Iran, Syria, and North Korea is prohibited.

Ordering Information

Pressure Sensor Air PS-AS
Order number **0281.002.996**

Dimensions



Represented by:

Europe:
Bosch Engineering GmbH
Motorsport
Robert-Bosch-Allee 1
74232 Abstatt
Germany
Tel.: +49 7062 911 9101
Fax: +49 7062 911 79104
motorsport@bosch.com
www.bosch-motorsport.de

North America:
Bosch Engineering North America
Motorsport
38000 Hills Tech Drive
Farmington Hills, MI 48331-3417
United States of America
Tel.: +1 248 876 2977
Fax: +1 248 876 7373
motorsport@bosch.com
www.bosch-motorsport.com

Asia-Pacific:
Bosch Engineering Japan K.K.
Motorsports Department
1-9-32 Nakagawa Chuo, Tsuzuki-ku
Yokohama City
Kanagawa Prefecture 224-8601
Japan
Tel.: +81 45 605 3032
Fax: +81 45 605 3059
www.bosch-motorsport.jp

Australia, New Zealand and South Africa:
Robert Bosch Pty. Ltd
Motorsport
1555 Centre Road
Clayton, Victoria, 3168
Australia
Tel.: +61 (3) 9541 3901
motor.sport@au.bosch.com